

# CERTIFICATE OF LOCATION OF GOVERNMENT CORNER

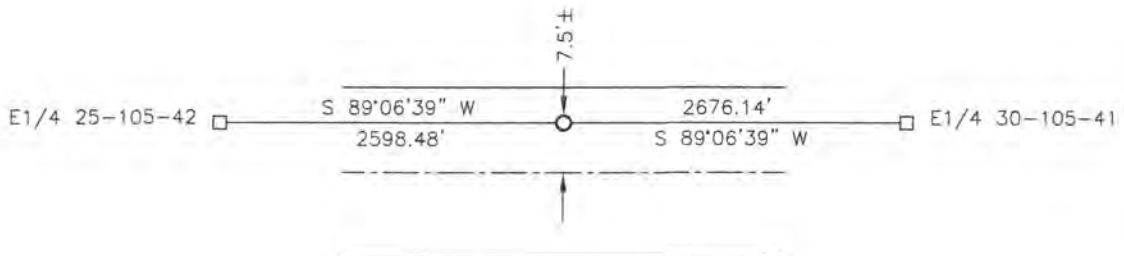
CENTER of Section 30, Township 105, Range 41, 5TH P.M.

STATE OF MINNESOTA, County of MURRAY

At the corner location shown on the sketch:

- On \_\_\_\_\_ found a \_\_\_\_\_  
DATE
- left monument as found,  lowered monument,  removed monument (explain)
- On 07/17/2018 placed a SURVEY SPIKE WITH SEAL #43844.  
DATE

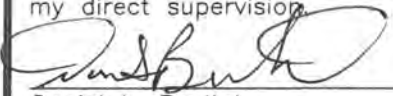
## SKETCH OF REFERENCE TIES



Minnesota State Plane Coordinate  
System Murray County Datum  
NAD83 (1996)  
N: 108070.678  
E: 487552.953

Statement of evidence relative to this corner location is on back of page.

I hereby certify that this document and the data contained herein was prepared by me or under my direct supervision.



Daniel L. Bueltel  
License No. 43844

8/28/18  
DATE

Statement of Evidence

CENTER 30-105-41

In 1861, Wellman and Smoot did the original subdivision of the township.

On May 1, 1988, the Murray County Highway Department dug a 6'x8' hole 4' deep. They did not find anything.

On July 17, 2018 Beutel-Moseng Land Surveying set a survey spike with seal #43844 at the corner. It is in line with the field lines to the north and south, and is 7.5'± north of the center of the road.